



cromwell



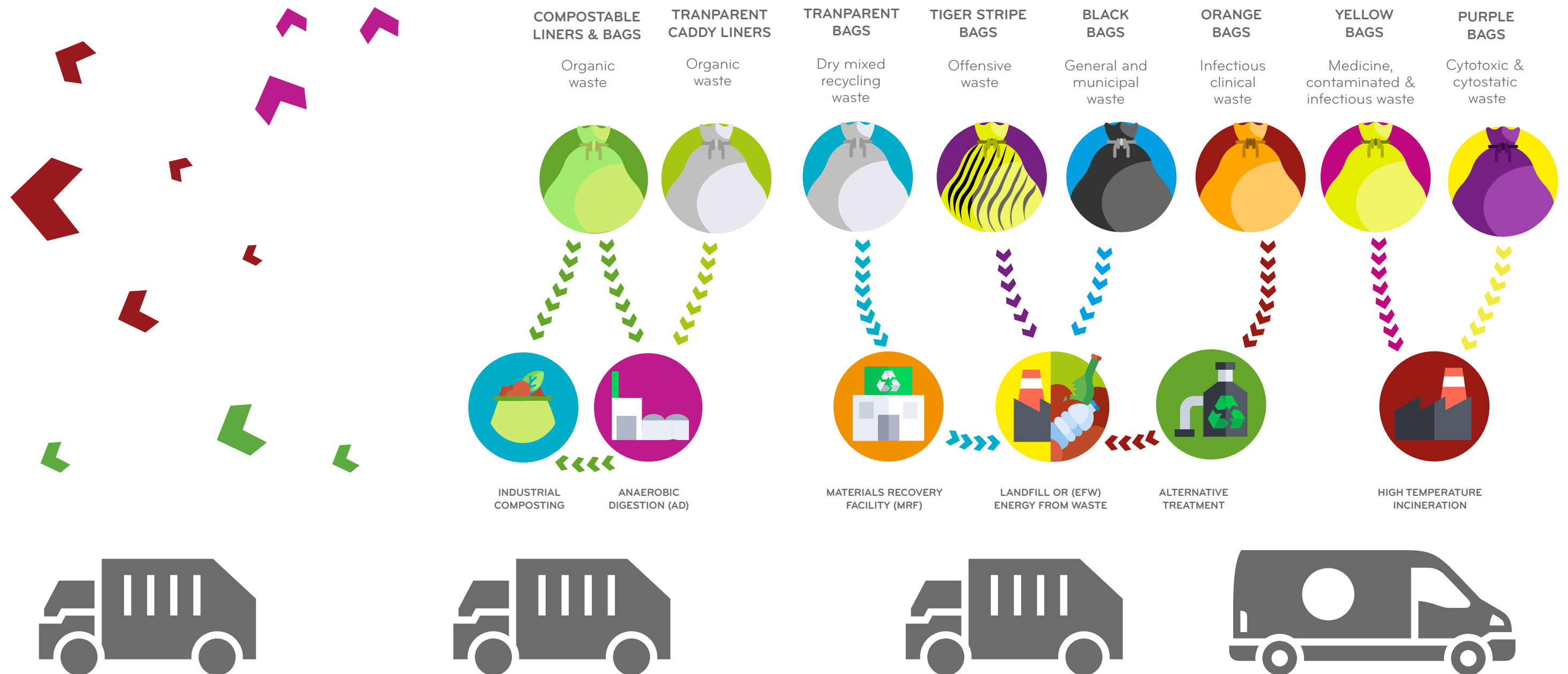
CLINICAL WASTE DISPOSAL - WHICH BAG IS BEST?





cromwell

Special consideration is needed when dealing with clinical waste, which requires different treatment and disposal methods appropriate to the hazard it may present – offensive, infectious, contaminated with medicines, cytotoxic. Yellow or Orange bags may be used for collection, storage, transport, treatment and disposal, with printed information pertaining to the standard design weight (contents capacity) and, in the case of infectious waste, the UN packaging certification number.



WASTE SEGREGATION: BAG TYPES EXPLAINED



PURPLE BAGS

Cytotoxic waste bags are purple and are used to store clinical waste that has been contaminated with cytotoxic or cytostatic medicines. The colour helps to distinguish cytotoxic waste from other types of clinical waste and to avoid cross-contamination.

- Drugs, antibiotics, and antiviral medications
- Incontinence waste
- PPE (gloves, masks aprons)
- Drug administration equipment (e.g. swabs, IV drip sets)
- Cytotoxic contaminated waste.

DISPOSAL

This waste must be sent for high temperature incineration.

PRODUCED IN

In any human or animal healthcare location.



ORANGE BAGS

Orange Bags – for Infectious soft Clinical Waste, including dressings, swabs, wipes, gloves, gowns etc.

This is waste arising from the treatment of infectious patients, or to those suspected of having an infection, possibly contaminated with bodily fluids. NOT containing medicine contaminated waste. It encompasses materials contaminated with pathogens capable of transmitting diseases to humans or animals. For example:

- PPE (gloves, masks aprons)
- Wipes, dressings, plasters and bandages
- Incontinence waste
- Empty saline or glucose IV bags, and tubing (no active medicines added).

DISPOSAL

Alternative Treatment

PRODUCED IN

In any human or animal healthcare location.



YELLOW BAGS

Yellow Bags – for infectious waste that is contaminated with medicines or chemicals

This is waste that has been used in the treatment of infectious patients, those suspected of having an infection and are contaminated with medicines or chemicals. For example:

- PPE (gloves, masks aprons)
- Wipes, dressings, plasters and bandages
- Incontinence waste
- Empty saline or glucose IV bags, and tubing (no active medicines added)
- IV Bags, lines and tubing that have had medicine added
- Chemically contaminated waste.

DISPOSAL

This waste must be sent for high temperature incineration.

PRODUCED IN

In any human or animal



TIGER STRIPE BAGS

Yellow Bags with Black Stripe (Tiger Bags) – for offensive waste (inc. sanitary / nappy waste).

For waste arising from the treatment of non-infectious patients, possibly containing bodily fluids, for example:

- PPE (gloves, masks aprons)
- Wipes, dressings, plasters and bandages – non infectious
- Incontinence waste – non infectious
- Soiled sanitary towels and tampons from public and work based female toilets
- Nappies – from adult or baby changing areas and nurseries.

This waste may be sent to landfill, or EfW incineration, or AT.

COMOSTABLE BAGS

Some waste management organisations may manage food waste differently.

Some organisation may collect food waste separately in compostable bags.



The most appropriate compostable products will be compliant with the European composting standard EN13432.

For example: Food or organic Waste.

This waste will be sent for Industrial Composting or Anaerobic Digestion where it could be further split into Open Air Windrow (OAW) Composting and In-Vessel Composting (IVC), (Anaerobic Digestion AD). Transparent Polythene caddy liners can also be used for separate food collections where anaerobic digestion is the preferred treatment.



BLACK BAGS

Black Bags – General Domestic Waste

This is for waste that is similar to that produced in the home environment, none recyclable, for example:

- Flowers
- Used medicine tots
- Sweet wrappers

This waste may be disposed of by landfill.



TRANSPARENT BAGS

Natural (Clear) Bags – Mixed Dry Recycling

For waste similar to that produced in the home environment, which is recyclable, for example:

- Paper / cardboard
- Paper towels
- Newspapers/magazines
- Clean Plastic bottles, Pots Tubs and Trays (PPT), Flexibles Films, and tin cans.

This waste may be sent to MRF (Materials Recovery Facility).



cromwell

Get to know us better

T: 01977 686 868
E: info@cromwellpolythene.co.uk
W: www.cromwellpolythene.co.uk

Head Office

Cromwell Polythene Ltd,
1 Glentool Avenue,
Sherburn in Elmet, Leeds
LS25 6RE