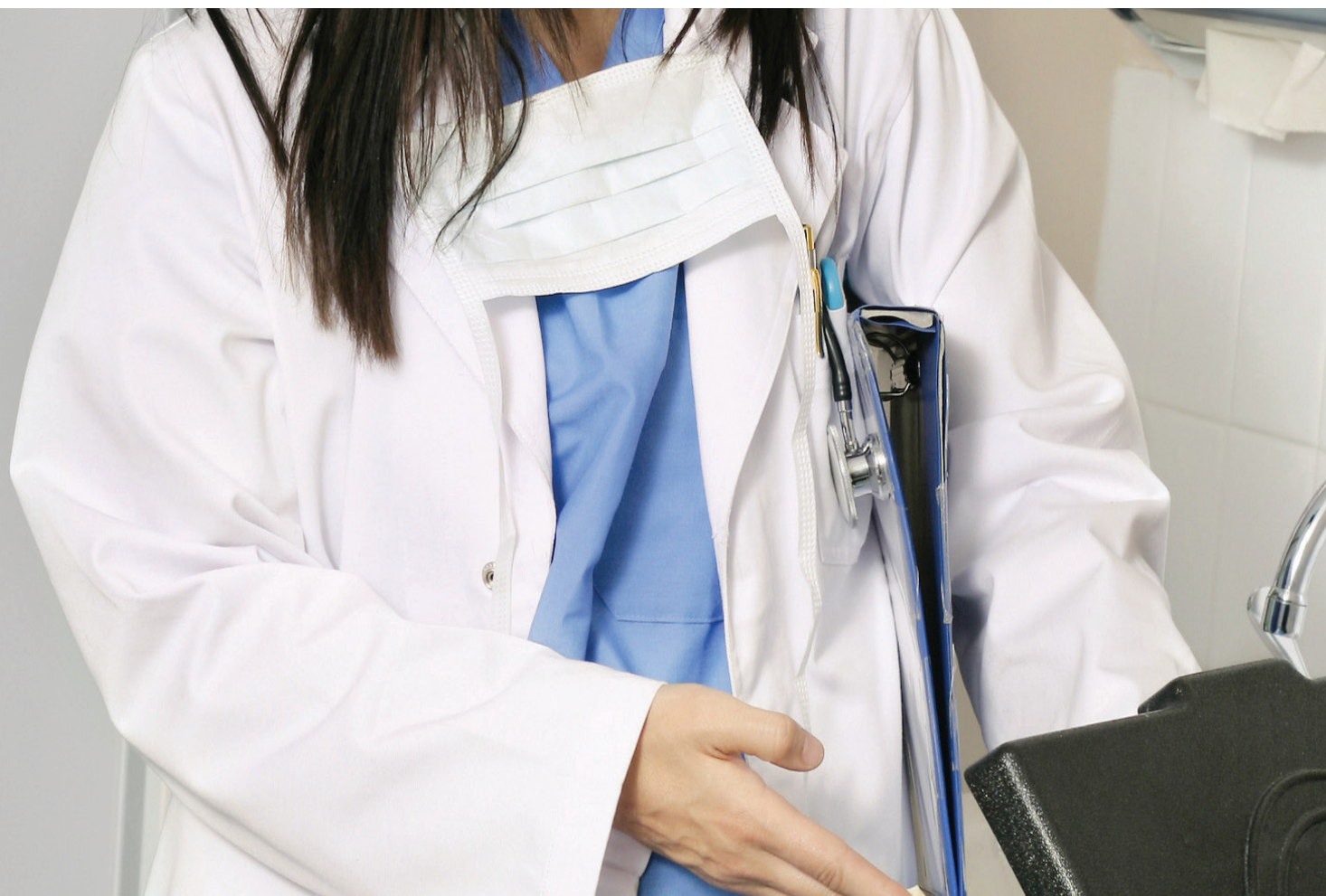




# cromwell



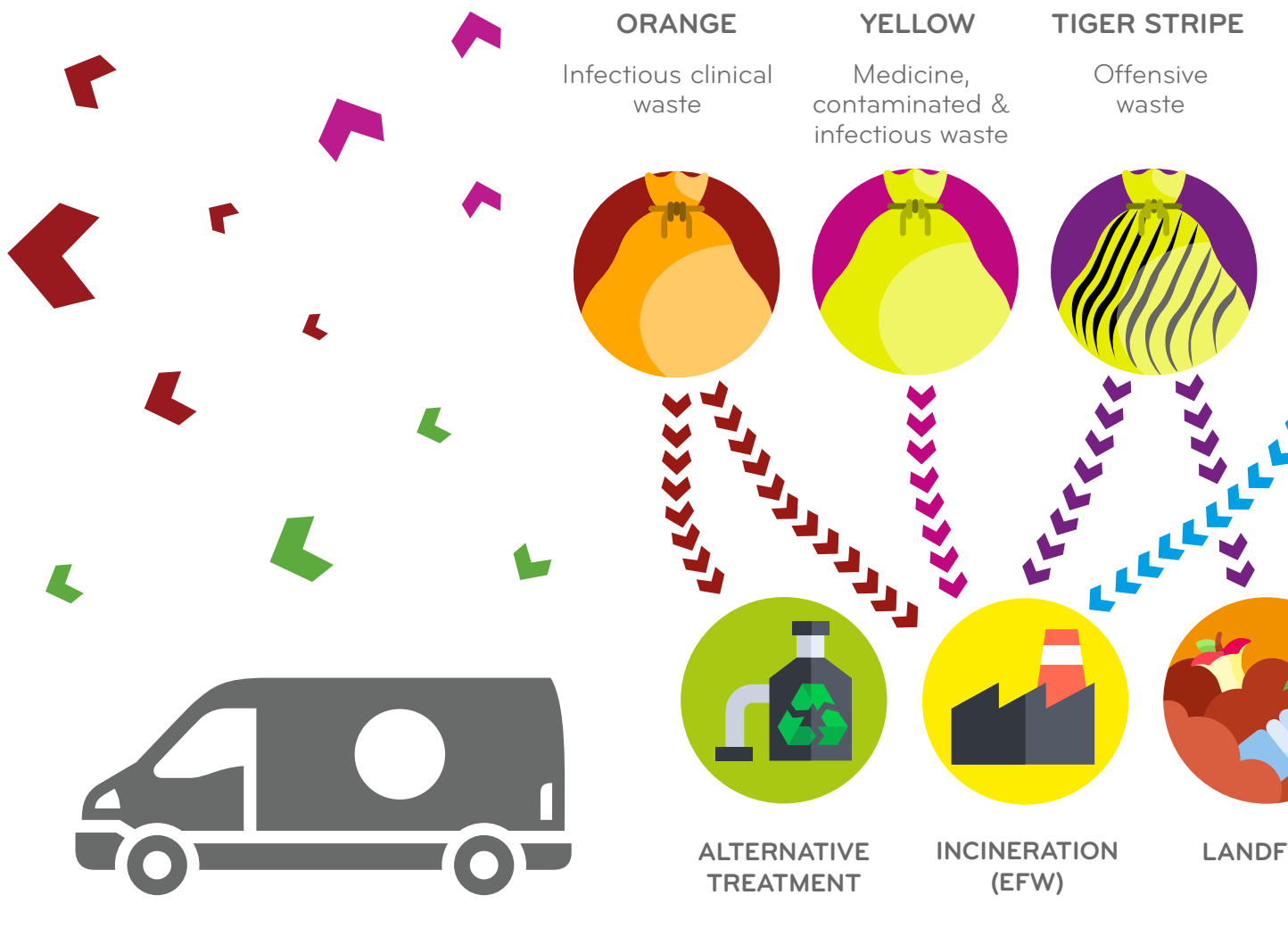
CLINICAL WASTE DISPOSAL - WHICH BAG IS BEST?



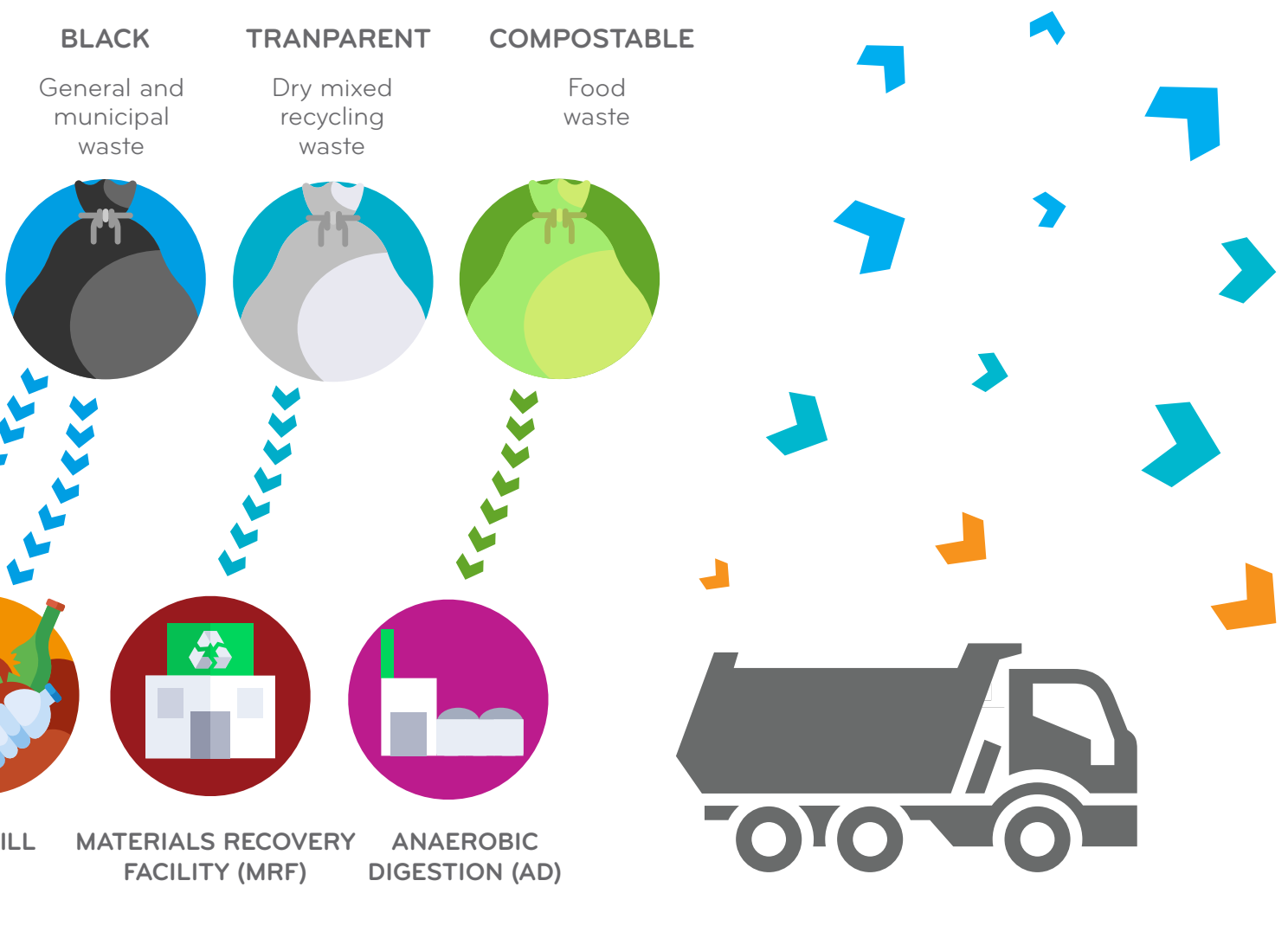


# cromwell

Special consideration is needed when dealing with clinical waste, which requires different treatment and disposal methods appropriate to the hazard it may present – offensive, infectious, contaminated with medicines, cytotoxic. Yellow or Orange bags may be used for collection, storage, transport, treatment and disposal, with printed information pertaining to the standard design weight (contents capacity) and, in the case of infectious waste, the UN packaging certification number.







# WASTE SEGREGATION: BAG TYPES EXPLAINED



## ORANGE BAGS

Orange Bags – for Infectious Clinical Waste.

This is waste arising from the treatment of infectious patients, or those suspected of having an infection, possibly contaminated with bodily fluids. NOT containing medicine contaminated waste. For example:

- PPE (gloves, masks aprons)
- Wipes, dressings, plasters and bandages
- Incontinence waste
- Empty saline or glucose IV bags, and tubing (no active medicines added)
- This waste may be sent for incineration (with energy from waste) or Alternative Treatment (AT) facilities.



## YELLOW BAGS

Yellow Bags – for infectious waste, including medicine contaminated infectious waste.

This is waste that has been used in the treatments of infectious patients, those suspected of having an infection and are contaminated with medicines or chemicals. For example:

- PPE (gloves, masks aprons)
- Wipes, dressings, plasters and bandages
- Incontinence waste
- Empty saline or glucose IV bags, and tubing (no active medicines added)
- IV Bags, lines and tubing that have had medicine added
- Chemically contaminated waste.

This waste must be sent for incineration (with energy from waste).



## TIGER STRIPE BAGS

Yellow Bags with Black Stripe (Tiger Bags) – for offensive waste (inc. sanitary / nappy waste).

For waste arising from the treatment of non-infectious patients, possibly containing bodily fluids, for example:

- PPE (gloves, masks aprons)
- Wipes, dressings, plasters and bandages – non infectious
- Incontinence waste – non infectious
- Soiled sanitary towels and tampons from public and work based female toilets
- Nappies – from baby changing areas and nurseries.

This waste may be sent to landfill, or incineration, or AT.



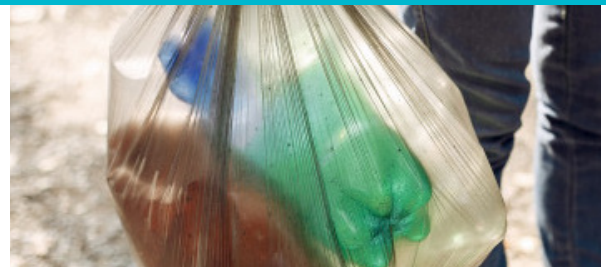
## BLACK BAGS

Black Bags – General Domestic Waste

This is for waste that is similar to that produced in the home environment, none recyclable, for example:

- Flowers
- Used medicine tots
- Sweet wrappers

This waste may be disposed of by landfill or EFW.



## COMOSTABLE BAGS

Some waste management organisations may manage food waste differently.

Some organisation may collect food waste separately in compostable bags.

Our compostable products are fully compliant with the European composting standard EN13432.



## TRANSPARENT BAGS

Natural (Clear) Bags – Mixed Dry Recycling

For waste similar to that produced in the home environment, which is recyclable, for example:

- Paper / cardboard
- Paper towels
- Newspapers/magazines
- Clean plastic and tins.

This waste may be sent to MRF (Materials Recovery Facility).



# cromwell

## Get to know us better

T: 01977 686 868  
E: [info@cromwellpolythene.co.uk](mailto:info@cromwellpolythene.co.uk)  
W: [www.cromwellpolythene.co.uk](http://www.cromwellpolythene.co.uk)

## Head Office

Cromwell Polythene Ltd,  
1 Glentool Avenue,  
Sherburn in Elmet, Leeds  
LS25 6RE

## Manufacturing

CPR Manufacturing Ltd  
Dunsford Road, Meadow Lane Ind Est,  
Alfreton,  
DE55 7RH